



ESL/S2YTV

*Colored LED
Operating Lamp*



OPERATING THEATRE



ES@G&MHU

Colored LED Operating Lamp

*With built-in CCD camera
and third arm with LCD monitor*

Cod. ESL/S2YTV



Thanks to their great performance and outstanding energy efficiency, the use of LEDs to illuminate demanding environments is becoming ever more common. Compared to conventional lamps, light emitting diodes have a whole range of technological, economic and ecological advantages: low heat generation, minimal power consumption and an almost unlimited life expectancy. The ESL/S2YTV combines these characteristics. The result: unparalleled performance.



- **Precise**

Uniform homogeneous lighting in surface and deep cavity procedures thanks to ESL/S2YTV innovative shadow control.

- **Simple**

Our ergonomic sterile operating concept allows for the simple and flexible control of all functions by the surgical team.

- **Durable**

Almost unlimited LED life expectancy delivers tremendous product reliability and investment protection.

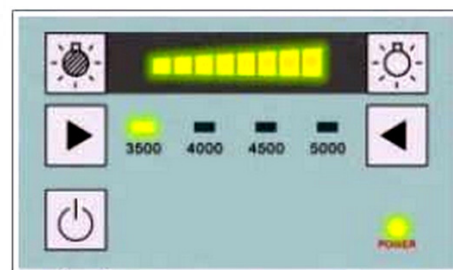
- **Efficient**

Environmentally proactive: low power consumption and durable LEDs minimize the impact on our precious resources.

- **Sterile control operations**

- One of the innovative characteristics of ESL/S2YTV is the sterile control concept that enables the surgical team to operate all important functions intuitively, quickly and simply - either on the light heads or via a wall control panel.

- On and off-switch
- Dimming with integrated Endo mode
- Shadow management



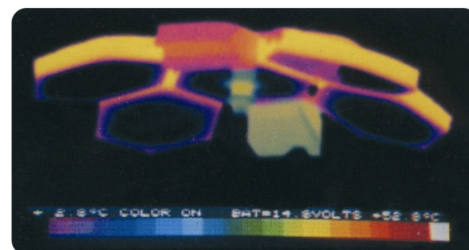
- **Optimized air flow design for better hygiene**

With its open design and superior ventilated ceiling tolerance, ESL/S2YTV ensures that perfect operating conditions are created and hygienic requirements are fulfilled. The airflow surface under the ventilated ceiling is minimized and the reduced heat generation ensures a low turbulence displacement stream under the light head.



- **Long life lighting**

LED light source life of up to 50,000 hours or more, with an average life of 30 times more than an ordinary shadowless halogen lamp, and each LED can be individually replaced, to ensure maximum use and economy.



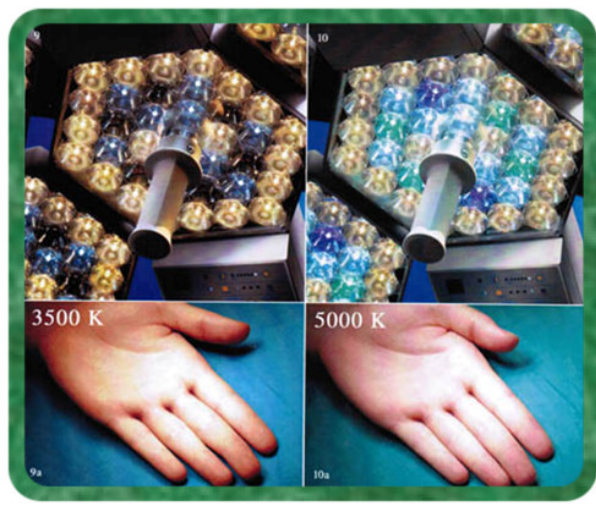


• **Color temperature adjustment technology**

LED operating lamp is composed of 4 kinds of colored LED lens, the color temperature can be adjusted from 3500K to 5000K to meet surgeon's different color temperature custom.

Color temperature can be adjusted according to blood supply of operation field to reach ideal contrast ratio of human tissue, so that surgeons can distinguish different body tissue optimally.

Furthermore, the surgeon will feel tired during long time operation and night operation. Study shows it can raise surgeon's attention and avoid asthenopia by increasing the color temperature step by step during the operation.



• **Technical features:**

Cod.	ESL/S2YTV
Central illuminance	120000 + 120000 Lux
Size of light field	200 - 350 mm
Adjustable color temperature	3500K, 4000K, 4500K, 5000K
Color reduction index	96
Service life of illuminant	50000 h
Total irradiance	380W/m ²
Lowest height of installation	2900 mm
Operator head temp. rise	< 1°C



ESSE3 srl, Via Garibaldi 30
 14022 Castelnuovo D.B. (AT)
 Tel +39 011 99 27 706
 Fax +39 011 99 27 506
 e-mail esse3@chierinet.it
 web: www.esse3-medical.com

